



DC Controlled screwdrivers

HD Series

0,3 to 9,8 NM



- Brushless DC motor (service free)
- ESD free by body grounding
- Torque repeatability ~ 7%
- Inside memory chip for tool data and recognition
- Built - in air clutch
- Angle monitoring
- Sequencing programs

PHD100N-A/D

HD100N-A

HD220A

HD150PA

40 Volts hybrid screwdrivers

0,3 - 4,4 Nm

| Model | Torque Range (Nm) | Speed rotation (rpm) | Drive | Starting system | Weight (Kg) | Code |
|-----------|-------------------|----------------------|----------|-----------------|-------------|-----------|
| HD081A | 0,3 - 0,78 | 500 to 1700 | Hex 1/4" | Lever | 0,44 | 6-1058880 |
| HD150A-G | 0,5 - 1,5 | 500 to 1700 | Hex 1/4" | Lever | 0,44 | 6-1027470 |
| HD220A-G | 0,7 - 2,2 | 400 to 1250 | Hex 1/4" | Lever | 0,44 | 6-1027471 |
| HD450A-G | 0,98 - 4,4 | 300 to 600 | Hex 1/4" | Lever | 0,51 | 6-1027472 |
| HD150PA-G | 0,5 - 1,5 | 500 to 1700 | Hex 1/4" | Push to start | 0,44 | 6-1027473 |
| HD220PA-G | 0,7 - 2,2 | 400 to 1250 | Hex 1/4" | Push to start | 0,44 | 6-1027475 |
| HD450PA-G | 0,98 - 4,4 | 300 to 600 | Hex 1/4" | Push to start | 0,51 | 6-1027474 |

Standard packing : screwdriver, 14P-3M cable, test bits.

40 Volts hybrid spindles

0,5 - 4,4 Nm

| Model | Torque Range (Nm) | Speed rotation (rpm) | Drive | Starting system | Weight (Kg) | Code |
|---------|-------------------|----------------------|----------|-----------------|-------------|-----------|
| HDA150A | 0,5 - 1,5 | 500 to 1700 | Hex 1/4" | Remote | 0,44 | 6-1042224 |
| HDA220A | 0,7 - 2,2 | 400 to 1250 | Hex 1/4" | Remote | 0,44 | 6-1042225 |
| HDA450A | 0,98 - 4,4 | 300 to 600 | Hex 1/4" | Remote | 0,51 | 6-1042226 |

Standard packing : screwdriver, 14P-3M cable, test bits.

35 Volts hybrid screwdrivers

1,17 - 9,8 Nm

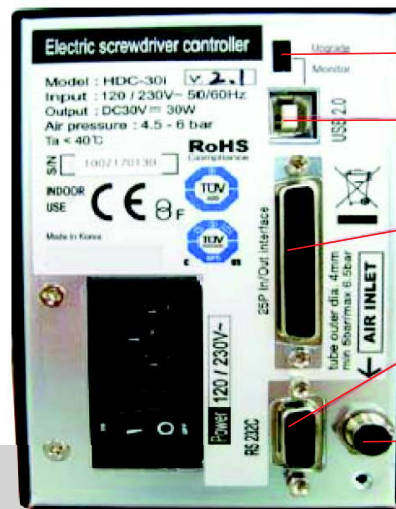
| Model | Torque Range (Nm) | Speed rotation (rpm) | Drive | Starting system | Shape | Weight (Kg) | Code |
|---------------|-------------------|----------------------|----------|-----------------|----------|-------------|-----------|
| HD35N-A | 1,17 to 3,4 | 500 to 1500 | Hex 1/4" | Lever | Straight | 0,7 | 6-1077880 |
| HD50N-A | 1,47 to 4,9 | 300 to 1050 | Hex 1/4" | Lever | Straight | 0,7 | 6-1077881 |
| HD100N-A | 3 to 9,8 | 250 to 500 | Hex 1/4" | Lever | Straight | 0,75 | 6-1077882 |
| HD35NP-A | 1,17 to 3,4 | 500 to 1500 | Hex 1/4" | Push to start | Straight | 0,7 | 6-1070035 |
| HD50NP-A | 1,47 to 4,9 | 300 to 1050 | Hex 1/4" | Push to start | Straight | 0,7 | 6-1070036 |
| PHD35N-A/U* | 1,17 to 3,4 | 500 to 1500 | Hex 1/4" | Trigger | Pistol | 0,82 | 6-1070032 |
| PHD50N-A/U* | 1,47 to 4,9 | 400 to 1100 | Hex 1/4" | Trigger | Pistol | 0,82 | 6-1070033 |
| PHD100N-A/U* | 3 to 9,8 | 250 to 500 | Hex 1/4" | Trigger | Pistol | 0,86 | 6-1070034 |
| PHD35N-A/D** | 1,17 to 3,4 | 500 to 1500 | Hex 1/4" | Trigger | Pistol | 0,82 | 6-1070040 |
| PHD50N-A/D** | 1,47 to 4,9 | 400 to 1100 | Hex 1/4" | Trigger | Pistol | 0,82 | 6-1070041 |
| PHD100N-A/D** | 3 to 9,8 | 250 to 500 | Hex 1/4" | Trigger | Pistol | 0,86 | 6-1070042 |

Standard packing : screwdriver, 14P-3M cable, test bits.

* : Top exit cable

** : handle exit cable

Controllers



- Com port usage selector
- USB Port for PC communication or firmware upgrade
- 25P I/O interface
- RS-232C Port
- Air pressure inlet (out dia 4 mm)

HDC-40i/HDC-35i

- Delivered with USB Com cable, air filter, air hose.

| No | ITEM | SPECIFICATION | |
|----|--|---|---------------------------------------|
| 1 | Model | HDC-40i - 6-1042211 for HD40 V | HDC-35i - 6-1077883 for HD35 V |
| 2 | Input | Electric | AC120VC or AC220V, 50~60 Hz |
| 3 | | Air pressure | Min 5 bar/Max 6,5 bar |
| 4 | Output | Electric | DC40V, 3A DC35V, 3A |
| 5 | Fuse | | AC250V, 10A AC250V, 5A |
| 6 | Dimension/Weight | 97(w) 222(d) 129(h) mm / 2,1kg | 104(w) 226,4(d) 144(h)mm / 2,6 Kg |
| 7 | Job parameters | Torque, Speed, Angle, Soft start, Torque tuning in 8 preset numbers | |
| 8 | Job selection | 1) Front panel button 2) 25P I/O interface 3) F1 button on the driver | |
| 9 | Torque Calibration | From - 20% to +20% | |
| 10 | Auto detection of the connected Driver | Auto detection of the offset value from the EEP-rom inside the driver | |
| 11 | Error display | Error display by code no. in system, communication & pattern error group | |
| 12 | Fastening quality control | OK/NG monitoring of screw fastening by preset pattern of angles, times | |
| 13 | Screw Counter | Save the total screw number, and monitor the number of OK fastenings. | |
| 14 | Monitoring and parameter | Monitoring and parameter settings on PC program (MS Windows base) | |
| 15 | Communication port | USB or RS232C (option) | |
| 16 | Built in counter program | 8 counting programs, 20 screws per program. Auto-sequencing of fastening strategies. | |

Accessories



Standard :

Driver Cable 14p 3M
Code : 6-1042205
(delivered with the tool)



USB Com Cable
Code : 6-1042213
(delivered with the controller)



Pistol Grip for HD-G 40 V
Code : 6-1042210
I/O sub-D25 male cable
Code : 4-3003000

Option :



Angle head kit for HD-G 40 V
Code : 6-1000251



DC Controlled screwdrivers

SD Series 

0,016 to 2,7 NM



- 24V Swiss DC Servo motor
- Over 5 millions cycles of life expectancy
- Torque accuracy 10 % in full scale
- Torque repeatability $\pm 3\%$
- 190 - 1000 rpm Speed control (scale : 50 rpm)
- 8 programs memory
- Real time monitoring - torque, rpm, angle
- ESD free with conductive material
- Suitable for clean room
- Real time torque and angle curve

| Model | Starting system | Torque Range (Nm) | Speed Rotation (rpm)** | Drive | Weight (Kg) | Controller | Code |
|-----------|-----------------|-------------------|------------------------|----------------|-------------|------------|-----------|
| SD 120 Z | Remote | 0,016 - 0,15 | 240 to 1000 | Half-moon 4 mm | 0,46 | SDC-24 | 6-1000235 |
| SD 200 Z | Remote | 0,05 - 0,2 | 420 to 1000 | Half-moon 4 mm | 0,46 | SDC-24 | 6-1000236 |
| SD 300 Z | Remote | 0,1 - 0,3 | 360 to 890 | Half-moon 4 mm | 0,46 | SDC-24 | 6-1000237 |
| SDA 120 | Remote | 0,016 - 0,15 | 240 to 1000 | Half-moon 4 mm | 0,46 | SDC-24 | 6-1000238 |
| SDA 200 | Remote | 0,05 - 0,2 | 420 to 1000 | Half-moon 4 mm | 0,46 | SDC-24 | 6-1000239 |
| SDA 300 | Remote | 0,1 - 0,3 | 360 to 890 | Half-moon 4 mm | 0,46 | SDC-24 | 6-1000240 |
| SDA 600-A | Remote | 0,15 - 0,6 | 190 to 710 | 1/4" Hex | 0,46 | SDC-24 | 6-1088880 |
| SDA1000-A | Remote | 0,19 - 0,98 | 130 to 430 | 1/4" Hex | 0,67 | SDC-24 | 6-1000246 |
| SDA 05N | Remote | 0,11 - 0,48 | 300 to 1000 | Half-moon 4 mm | 0,68 | SDC-40 | 6-1000266 |
| SDA 09 N | Remote | 0,15 - 0,87 | 300 to 1000 | Half-moon 4 mm | 0,69 | SDC-40 | 6-1000267 |
| SDA 18N-A | Remote | 0,4 - 1,7 | 300 to 1000 | Hex 1/4" | 0,75 | SDC-40 | 6-1041800 |
| SDA28N-A | Remote | 0,5 - 2,7 | 190 to 1000 | Hex 1/4" | 0,75 | SDC-40 | 6-1000248 |
| SD 120 | Lever | 0,03 - 0,15 | 240 to 1000 | Half-moon 4 mm | 0,26 | SDC-24 | 6-1000241 |
| SD 200 | Lever | 0,05 - 0,2 | 420 to 1000 | Half-moon 4 mm | 0,3 | SDC-24 | 6-1000242 |
| SD 300 | Lever | 0,1 - 0,3 | 360 to 890 | Half-moon 4 mm | 0,3 | SDC-24 | 6-1000243 |
| SD 600-A | Lever | 0,15 - 0,6 | 190 to 710 | 1/4" Hex | 0,33 | SDC-24 | 6-1077801 |
| SD1000-A | Lever | 0,19 - 0,98 | 130 to 430 | 1/4" Hex | 0,38 | SDC-24 | 6-1077800 |
| SD1500-A | Lever | 0,3 - 1,47 | 120 to 430 | 1/4" Hex | 0,38 | SDC-24 | 6-1000596 |
| SD05N | Lever | 0,11 - 0,48 | 300 to 1000 | Half-moon 4 mm | 0,64 | SDC-40 | 6-1000268 |
| SD09N | Lever | 0,15 - 0,87 | 300 to 1000 | Half-moon 4 mm | 0,65 | SDC-40 | 6-1000269 |
| SD18N-A | Lever | 0,4 - 1,7 | 300 to 1000 | Hex 1/4" | 0,75 | SDC-40 | 6-1000252 |
| SD28N-A | Lever | 0,5 - 2,7 | 190 to 1000 | Hex 1/4" | 0,75 | SDC-40 | 6-1000253 |

** : optimized speed according torque target-auto-speed.

Z : fixtured spindle with Offset

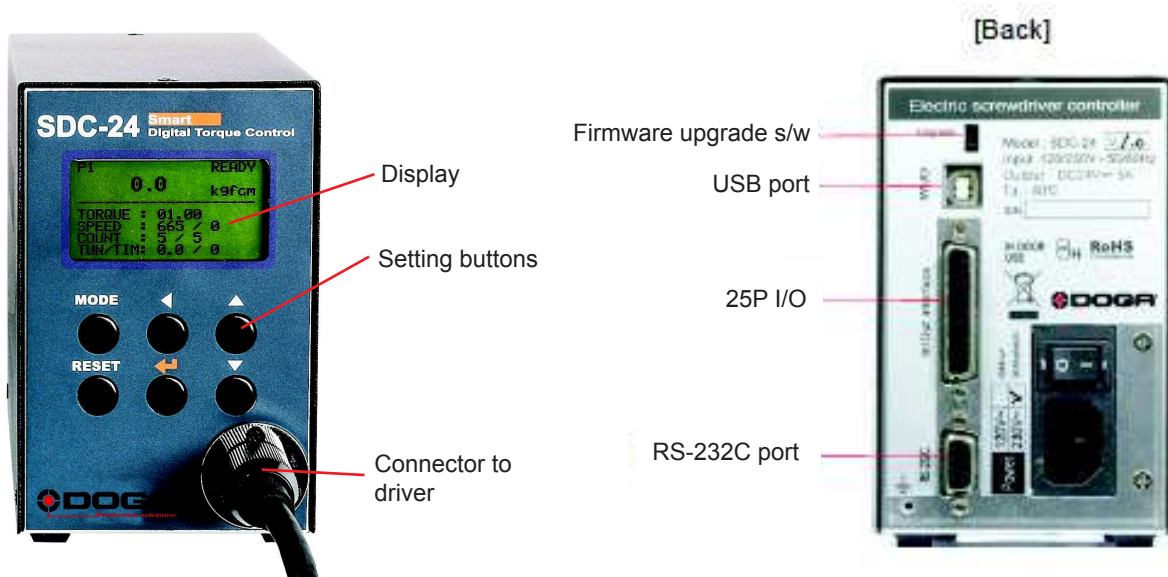
SDA : fixtured spindle

SD : hand held, lever start

Real time torque & angle curve



Controller



SDC-24 or SDC-40

| No | Item | SDC-24 Code 6-1000245 | SDC-40 Code 6-1041801 |
|----|----------------------------------|--|--------------------------|
| 1 | Input | AC120VC or AC220V, 50-60Hz | |
| 2 | Output | DC24V, 5A | DC40V, 3A |
| 3 | Control Range | Torque | 0,1 - 1,47 Nm |
| | | Speed | 100 - 1,000 rpm |
| | | Angle | 0,4° step |
| 4 | Preset parameters | Torque, (Speed) & Angle | |
| 5 | Preset # selecting | 1) Front panel button 2) 25P I/O interface | |
| 6 | Torque calibration | -10% - + 10% | |
| 7 | Auto recognition | Auto detection of connected driver when power ON of controller | |
| 8 | Error display | Error code display (3 groups) | |
| 9 | Fastening quality control | Fastening data verification (NG/OK) against the pre-setting pattern of angle | |
| 10 | Screw counter | Total 8 programs of tightening screw number and sequence | |
| 11 | Parameter setting and monitoring | MS Windows PC software, Smart-Manager of front panel | |

ACCESSORIES : (delivered with the controller)
 - Driver cable SD 10 PC, 3 M **Code : 6-1074440**
 - USB com cable **Code : 6-1042213**

OPTION :
 - 5 meters tool cable **Code : 6-1074420**
 - I/O sub-d25 male cable **Code : 4-3003000**



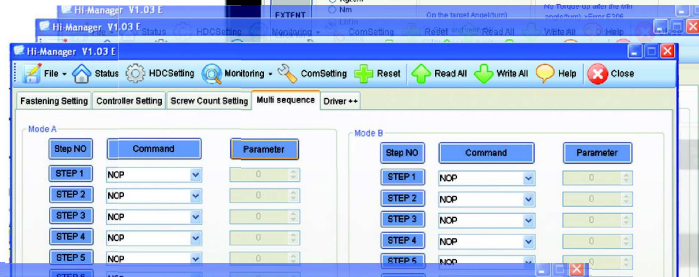
Software

Smart Manager (SD Series)/Hi-Manager (HD Series)

Set and monitor your tool,
your tightening environment on
free PC Software,



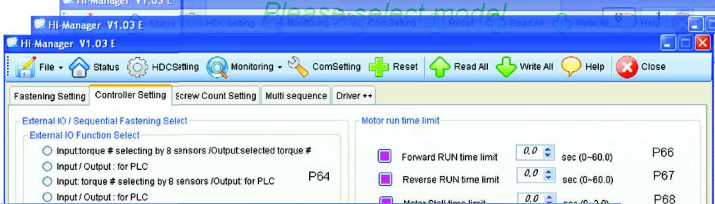
Job settings
(Torque,
Speed, Angle,
Soft start,
Torque tuning)



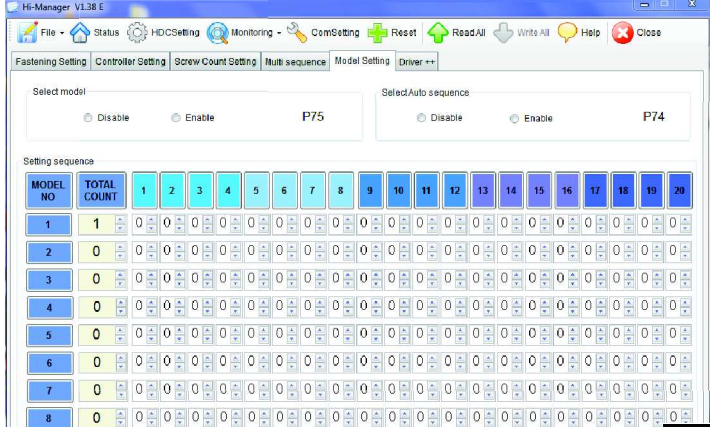
Real time readings
of all tightenings



Screw counter
process Monitoring



Error Monitoring



Built-in counting program
with torque sequencing